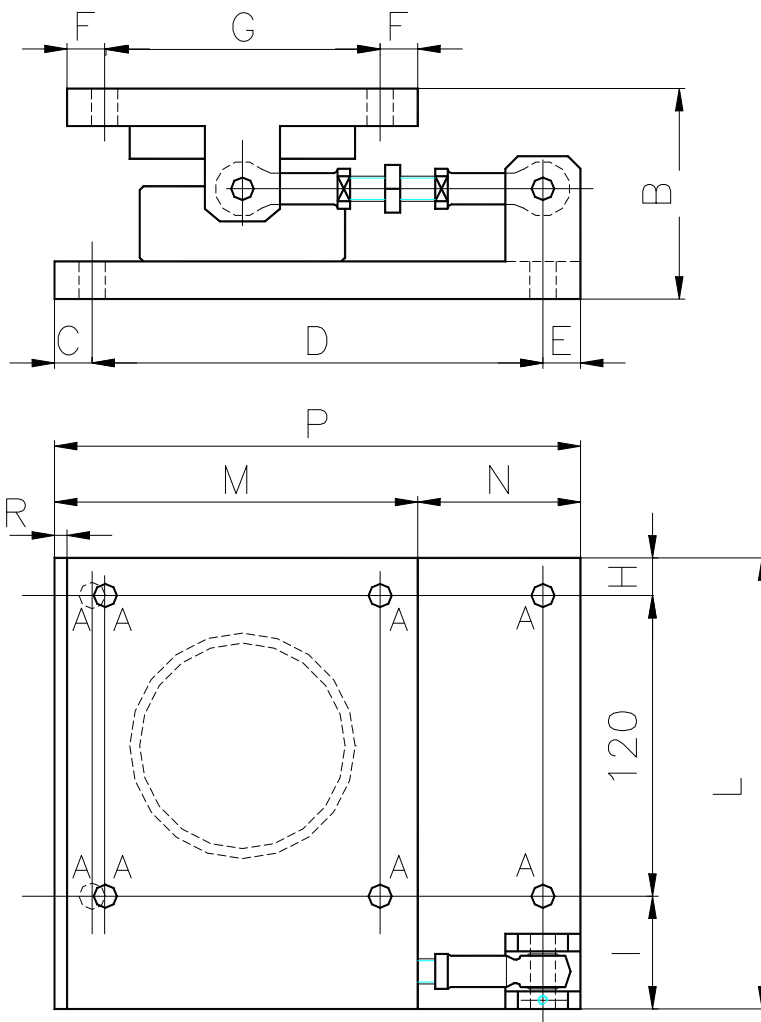




- For compression load cell CM
- Material: painted iron



	0,25÷5 Ton	7,5÷35 Ton	50 Ton
<b>ØA</b>	Ø10,5	12	15
<b>B</b>	84	88	120
<b>C</b>	15	25	25
<b>D</b>	180	280	270
<b>E</b>	15	15	65
<b>F</b>	15	40	40
<b>G</b>	110	120	120
<b>H</b>	15	45	45
<b>I</b>	45	85	85
<b>L</b>	180	250	250
<b>M</b>	145	200	200
<b>N</b>	65	120	160
<b>P</b>	210	320	360
<b>R</b>	5	-	-