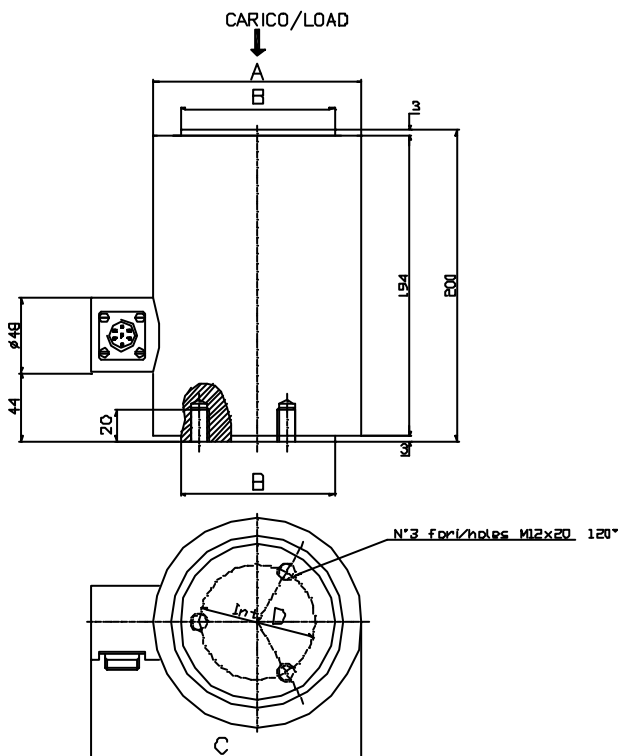




Capacity [T]	OIML
30	No
60	No
100	No
200	No
300	No
500	No

TECHNICAL CHARACTERISTICS	
Rated output	2 mV/V
Rated output tolerance	$\leq \pm 0,1\%$
Max excitation	15 Vcc
Zero balance	$\leq \pm 1\%$ f.s.
Input resistance	400 ± 25 ohm
Output resistance	350 ± 2 ohm
Insulation resistance	≥ 2000 Mohm
Combined error	$\leq \pm 0,1\%$ f.s.
Hysteresis	$\leq \pm 0,03\%$ f.s.
Creep 30'	$\leq \pm 0,06\%$ f.s.
Temperature effect on zero balance	$\leq \pm 0,01\%$ f.s./°C
Temperature effect on rated output	$\leq \pm 0,005\%$ f.s./°C
Compensated temperature range	$-10 \div +40$ °C
Operating temperature range	$-30 \div +70$ °C
Max safe load	150% f.s.
Breaking load	$> 300\%$ f.s.
Protection class	IP60 / IP67
Material	Steel
Standard cable length	5 m



Capacity [Ton]	Dimensions [mm]			
	A	B	C	D
30	Ø 135	ø 100	175	ø 75
60	Ø 135	ø 100	175	ø 75
100	Ø 135	ø 100	175	ø 75
200	Ø 135	ø 100	175	ø 75
300	Ø 135	ø 100	175	ø 75
500	Ø 180	ø 140	220	ø 75

Wiring	
Red	+ Excitation
Blue	- Excitation
Yellow	+ Signal
Green	- Signal
White	+ Reference
Black	- Reference