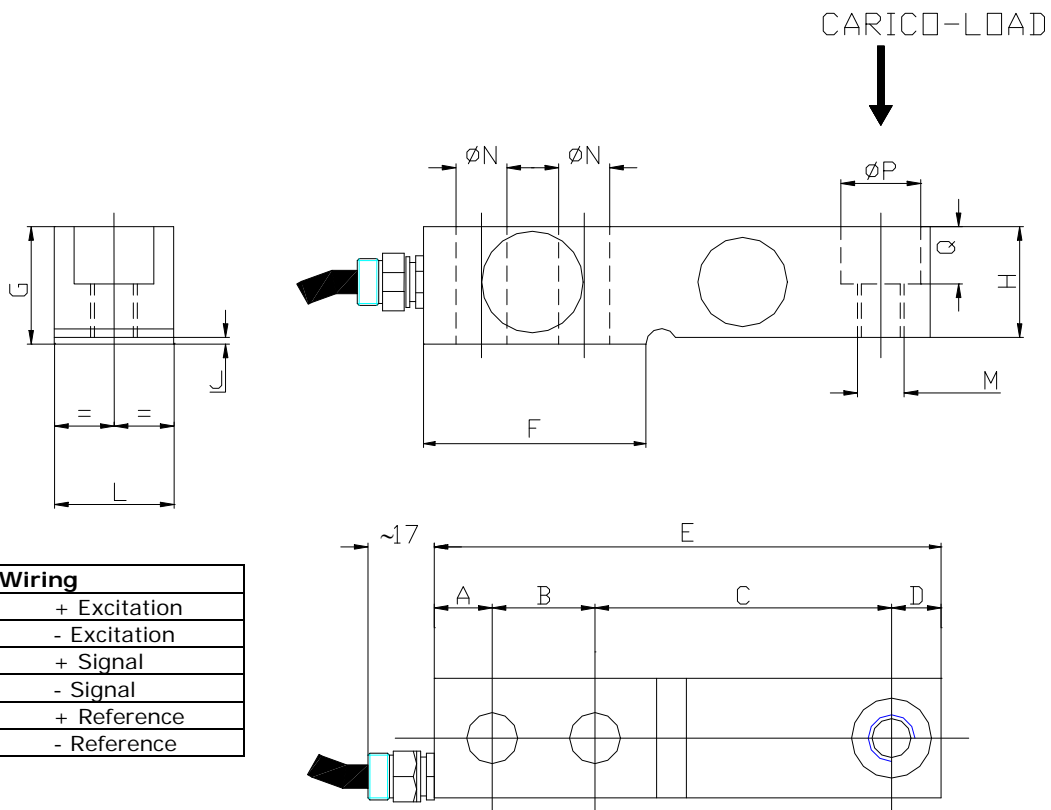




Capacity [Kg]	OIML
250	Yes
500	Yes
1000	Yes
1760	Yes
2500	Yes
5000	Yes

TECHNICAL CHARACTERISTICS	
Rated output	2 mV/V
Rated output tolerance	$\leq \pm 0,1\%$
Max excitation	15 Vcc
Zero balance	$\leq \pm 1\%$ f.s.
Input resistance	$400 \pm 25$ ohm
Output resistance	$350 \pm 2$ ohm
Insulation resistance	$\geq 2000$ Mohm
Combined error	$\leq \pm 0,03\%$ f.s.
Hysteresis	$\leq \pm 0,01\%$ f.s.
Creep 30'	$\leq \pm 0,03\%$ f.s.
Temperature effect on zero balance	$\leq \pm 0,005\%$ f.s./°C
Temperature effect on rated output	$\leq \pm 0,003\%$ f.s./°C
Compensated temperature range	-10 ÷ +40 °C
Operating temperature range	-20 ÷ +70 °C
Max safe load	150% f.s.
Bracking load	> 300% f.s.
Protection class	IP65
Material	Stainless steel
Standard cable length	5 m
OIML R60 C3 version	On request



Wiring	
Red	+ Excitation
Blue	- Excitation
Yellow	+ Signal
Green	- Signal
White	+ Reference
Black	- Reference

Capacity [Kg]	Dimensions [mm]													
	A	B	C	D	E	F	G	H	J	L	M	$\phi N$	$\phi P$	Q
500-1000-1760	14,9	26,4	76,2	12,7	130,2	57,15	30,15	28,45	1,7	30,7	M12x1,75	13	20,5	14,7
2500	19,05	38,1	95,25	19,1	171,5	76,2	36,5	34	2,5	36,8	M20x2,5	20	30,2	17
5000	19,05	38,1	95,25	19,1	171,5	76,2	42,9	40,4	2,5	42,9	M20x2,5	20	30,2	20,2