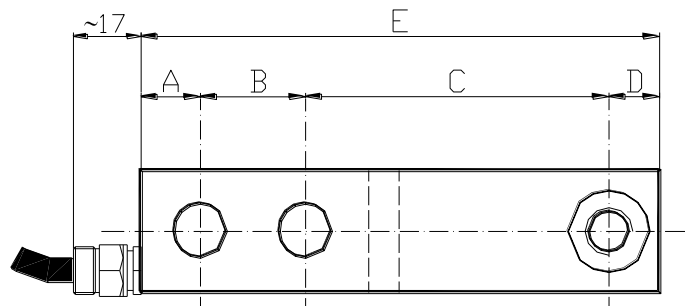
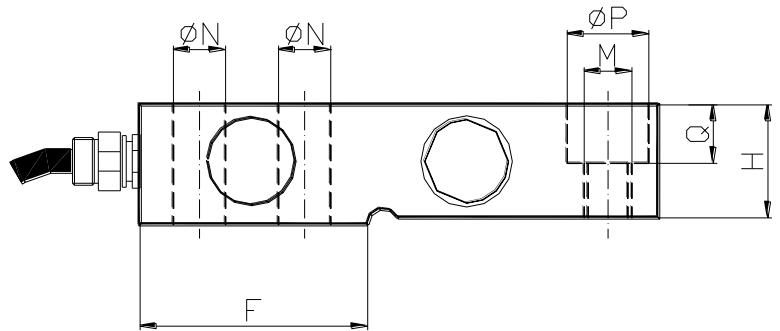
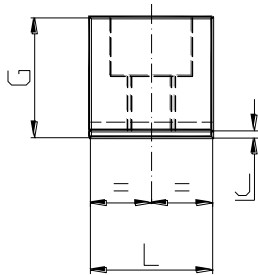




| Capacity[Kg] | OIML |
|--------------|------|
| 500 | Yes |
| 1000 | Yes |
| 1760 | Yes |
| 2500 | Yes |
| 5000 | No |
| 10000 | No |

| TECHNICAL CHARACTERISTICS | |
|------------------------------------|--|
| Rated output | 2 mV/V |
| Rated output tolerance | $\leq \pm 0,1\%$ |
| Max excitation | 15 Vcc |
| Zero balance | $\leq \pm 1\%$ f.s. |
| Input resistance | 380 ± 25 ohm |
| Output resistance | 350 ± 2 ohm |
| Insulation resistance | ≥ 5000 Mohm |
| Combined error | $\leq \pm 0,025\%$ f.s. |
| Hysteresis | $\leq \pm 0,007\%$ f.s. |
| Creep 30' | $\leq \pm 0,0245\%$ f.s. |
| Temperature effect on zero balance | $\leq \pm 0,0018\%$ f.s./ $^{\circ}\text{C}$ |
| Temperature effect on rated output | $\leq \pm 0,002\%$ f.s./ $^{\circ}\text{C}$ |
| Compensated temperature range | $-10 \div +40$ $^{\circ}\text{C}$ |
| Operating temperature range | $-20 \div +70$ $^{\circ}\text{C}$ |
| Max safe load | 150% f.s. |
| Bracking load | $> 300\%$ f.s. |
| Protection class | IP68 |
| Material | Stainless steel |
| Standard cable length | 5 m |
| OIML R60 C3/C4 version | On request |



| Wiring | |
|--------|--------------|
| Red | + Excitation |
| Blue | - Excitation |
| Yellow | + Signal |
| Green | - Signal |
| White | + Reference |
| Black | - Reference |

| Capacity [Kg] | Dimensions [mm] | | | | | | | | | | | | | |
|---------------|-----------------|------|-------|------|-------|-------|-------|-------|-----|------|-------------|----------------|----------------|------|
| | A | B | C | D | E | F | G | H | J | L | M | ϕN | ϕP | Q |
| 500-1000-1760 | 14,9 | 26,4 | 76,2 | 12,7 | 130,2 | 57,15 | 30,15 | 28,45 | 1,7 | 30,7 | M12x1,75 | 13 | 20,5 | 14,7 |
| 2500 | 19,05 | 38,1 | 95,25 | 19,1 | 171,5 | 76,2 | 36,5 | 34 | 2,5 | 36,8 | M20x2,5 | 20 | 30,2 | 17 |
| 5000 | 19,05 | 38,1 | 95,25 | 19,1 | 171,5 | 76,2 | 42,9 | 40,4 | 2,5 | 42,9 | M20x2,5 | 20 | 30,2 | 20,2 |
| 10000 | 25,4 | 82,6 | 139,7 | 31,7 | 279,4 | 144,7 | 65 | 61 | 4 | 58 | $\phi 31,8$ | 27 | 51,1 | 20,7 |