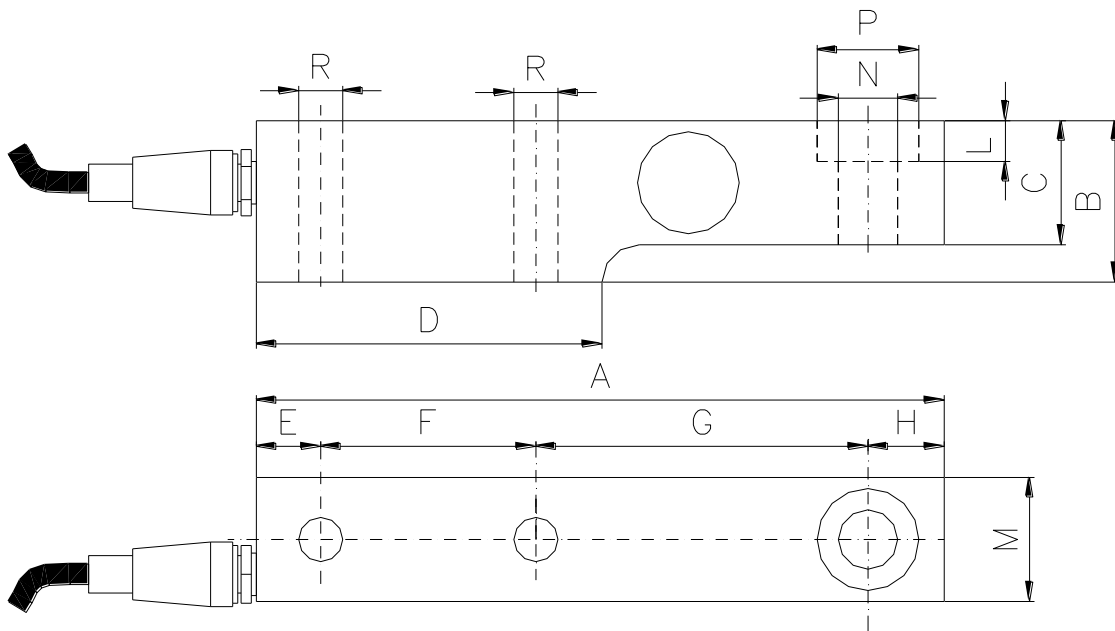




Capacity [Kg]	OIML
1000	Yes
2000	Yes
3000	Yes
5000	Yes
10000	Yes

TECHNICAL CHARACTERISTICS	
Rated output	2 mV/V
Rated output tolerance	$\leq \pm 0,1\%$
Max excitation	15 Vcc
Zero balance	$\leq \pm 1\%$ f.s.
Input resistance	400 ± 25 ohm
Output resistance	350 ± 2 ohm
Insulation resistance	≥ 5000 Mohm
Combined error	$\leq \pm 0,024\%$ f.s.
Hysteresis	$\leq \pm 0,015\%$ f.s.
Creep 30'	$\leq \pm 0,024\%$ f.s.
Temperature effect on zero balance	$\leq \pm 0,0014\%$ f.s./°C
Temperature effect on rated output	$\leq \pm 0,001\%$ f.s./°C
Compensated temperature range	-10 ÷ +40 °C
Operating temperature range	-20 ÷ +70 °C
Max safe load	150% f.s.
Bracking load	> 300% f.s.
Protection class	IP67
Material	Stainless steel
Standard cable length	5 m
OIML R60 C2 version	On request



Capacity [Kg]	Dimensions [mm]												
	A	B	C	D	E	F	G	H	L	M	øN	øP	øR
1000-2000-3000	203	47,5	36,5	102	19	63,5	98	22,5	12	36,5	17,5	30	13
5000	235	70	48	118	20,5	66,5	124	24	16	47,6	25,5	41	22,5
10000	280	82,5	63,5	140	25,5	82,5	140	32	20,5	60	32	56,3	27

Wiring	
Rosso	+ Excitation
Blu	- Excitation
Giallo	+ Signal
Verde	- Signal
Bianco	+ Reference
Nero	- Reference

