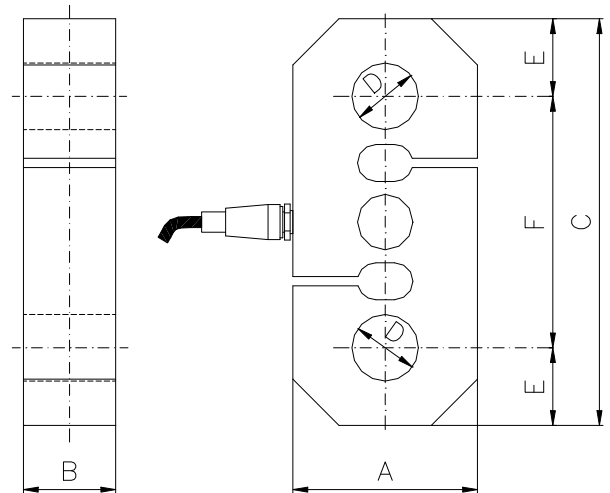
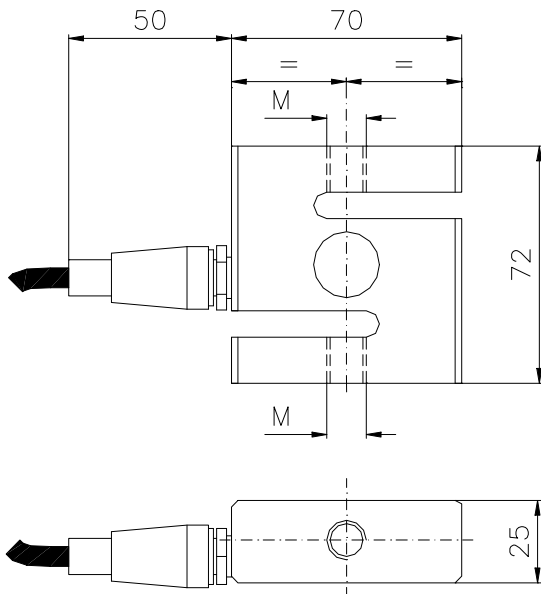


| Capacity [Kg] |       | OIML |
|---------------|-------|------|
| 100           | 200   | No   |
| 300           | 500   | No   |
| 1000          | 2000  | No   |
| 2500          | 5000  | No   |
| 7500          | 10000 | No   |
| 15000         | 20000 | No   |

| TECHNICAL CHARACTERISTICS          |  |
|------------------------------------|--|
| Rated output                       | 2 mV/V                                   |
| Rated output tolerance             | $\leq \pm 0,1\%$                         |
| Max excitation                     | 15 Vcc                                   |
| Zero balance                       | $\leq \pm 1\%$ f.s.                      |
| Input resistance                   | $400 \pm 25$ ohm                         |
| Output resistance                  | $350 \pm 2$ ohm                          |
| Insulation resistance              | $\geq 2000$ Mohm                         |
| Combined error                     | $\leq \pm 0,03\%$ f.s.                   |
| Hysteresis                         | $\leq \pm 0,017\%$ f.s.                  |
| Creep 30'                          | $\leq \pm 0,023\%$ f.s.                  |
| Temperature effect on zero balance | $\leq \pm 0,003\%$ f.s./°C               |
| Temperature effect on rated output | $\leq \pm 0,001\%$ f.s./°C               |
| Compensated temperature range      | $-10 \div +40$ °C                        |
| Operating temperature range        | $-30 \div +70$ °C                        |
| Max safe load                      | 150% f.s.                                |
| Breaking load                      | $> 300\%$ f.s.                           |
| Protection class                   | IP65                                     |
| Material                           | 0,1 ÷ 1 T Alluminium<br>1,5 ÷ 20 T Steel |
| Standard cable length              | 5 m                                      |



| Capacity [Kg] | Dim. [mm] |
|---------------|-----------|
| 100÷1000      | M         |
| 2000÷2500     | M         |

| Capacity [Kg] | Dimensions [mm] |    |     |    |    |     |
|---------------|-----------------|----|-----|----|----|-----|
|               | A               | B  | C   | ØD | E  | F   |
| 5000          | 100             | 36 | 200 | 26 | 33 | 134 |
| 7500          | 100             | 41 | 200 | 29 | 35 | 130 |
| 10000         | 100             | 50 | 220 | 36 | 42 | 136 |
| 15000         | 130             | 58 | 250 | 42 | 47 | 156 |
| 20000         | 130             | 70 | 250 | 52 | 47 | 156 |

| Wiring |              |
|--------|--------------|
| Red    | + Excitation |
| Blue   | - Excitation |
| Yellow | + Signal     |
| Green  | - Signal     |
| White  | + Reference  |
| Black  | - Reference  |