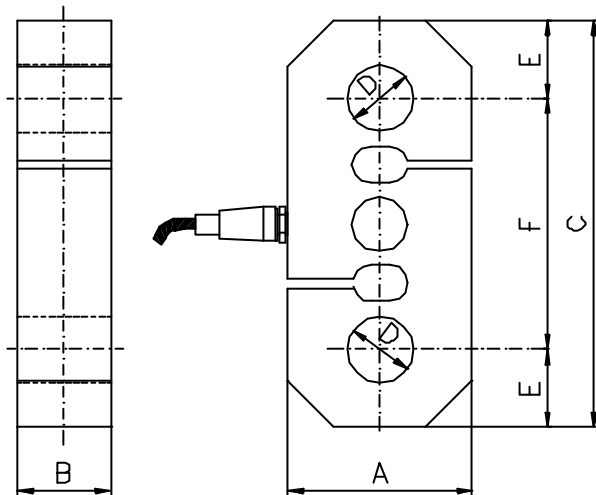
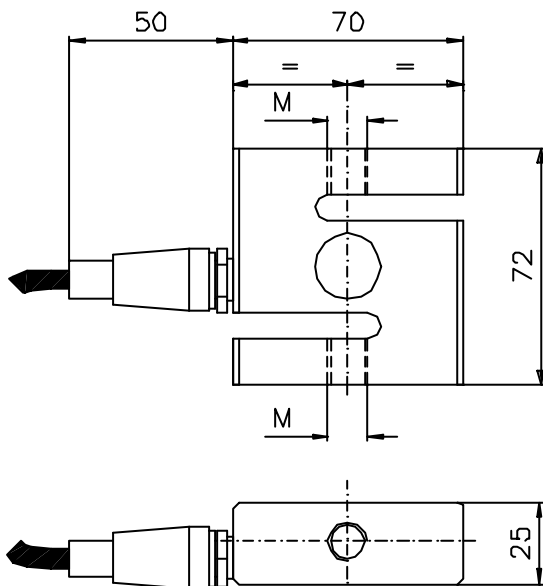




Capacity [Kg]		OIML
100	200	No
300	500	No
1000	2000	No
2500	5000	No
7500	10000	No
15000	20000	No

TECHNICAL CHARACTERISTICS	
Rated output	2 mV/V
Rated output tolerance	$\leq \pm 0,1\%$
Max excitation	15 Vcc
Zero balance	$\leq \pm 1\%$ f.s.
Input resistance	400 ± 25 ohm
Output resistance	350 ± 2 ohm
Insulation resistance	≥ 2000 Mohm
Combined error	$\leq \pm 0,03\%$ f.s.
Hysteresis	$\leq \pm 0,017\%$ f.s.
Creep 30'	$\leq \pm 0,023\%$ f.s.
Temperature effect on zero balance	$\leq \pm 0,003\%$ f.s./°C
Temperature effect on rated output	$\leq \pm 0,001\%$ f.s./°C
Compensated temperature range	-10 ÷ +40 °C
Operating temperature range	-30 ÷ +70 °C
Max safe load	150% f.s.
Breaking load	> 300% f.s.
Protection class	IP65
Material	0,1 ÷ 1 T Alluminium 1,5 ÷ 20 T Steel
Standard cable length	5 m



Capacity [Kg]	Dim. [mm]
100÷1000	M12 x 1,75
2000÷2500	M16 x 2

Capacity [Kg]	Dimensions [mm]					
	A	B	C	ØD	E	F
5000	100	36	200	26	33	134
7500	100	41	200	29	35	130
10000	100	50	220	36	42	136
15000	130	58	250	42	47	156
20000	130	70	250	52	47	156

Wiring	
Red	+ Excitation
Blue	- Excitation
Yellow	+ Signal
Green	- Signal
White	+ Reference
Black	- Reference